

## Optical Sky Screen Trigger Unit

### Rugged Design

### Accurate Detection

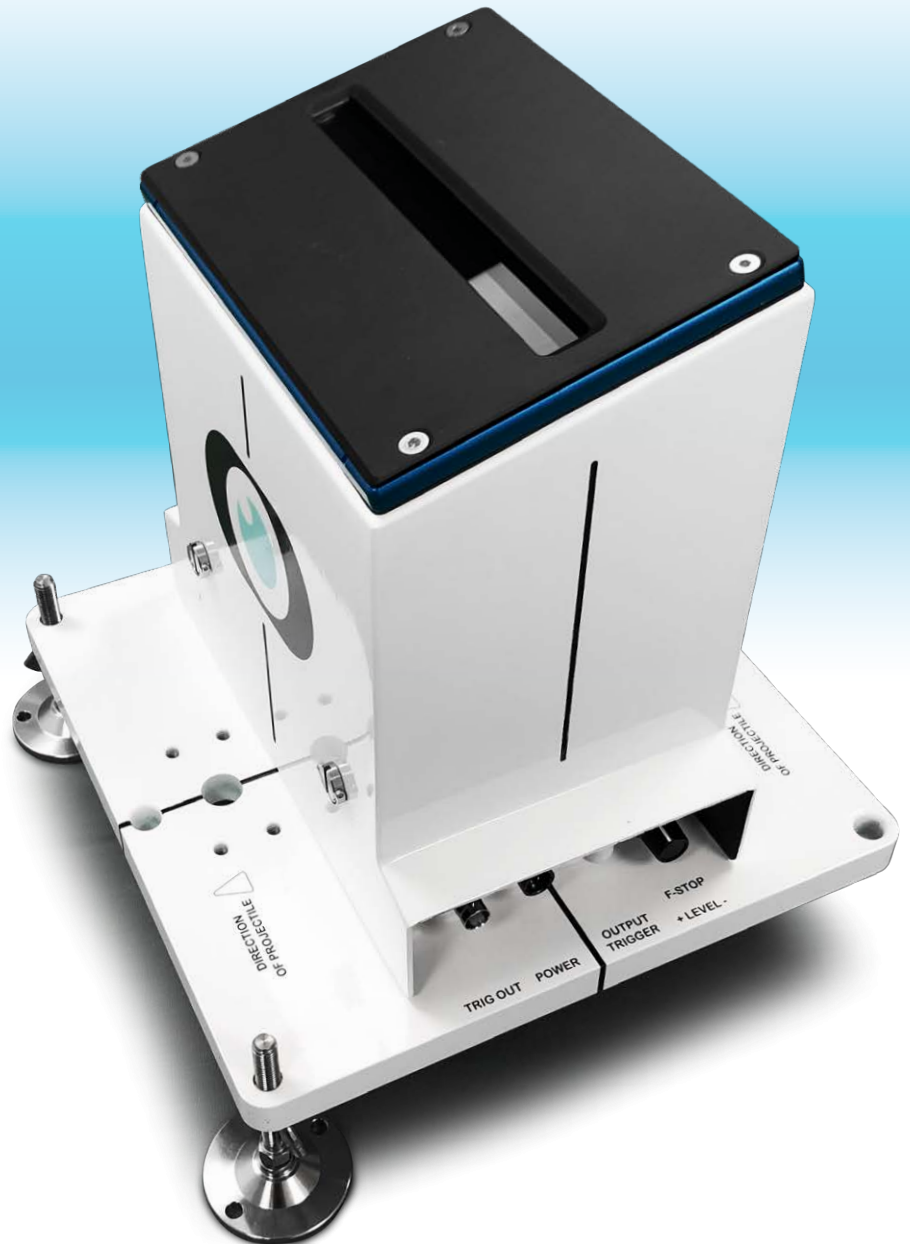
### Shadow Detector

The Specialised Imaging SST1 provides a reliable optical trigger for projectile "shadow" detection.

The rugged enclosure allows the SST1 to be used outside in all weather. Our low-ripple AC power unit provides constant power for all day operation.

#### FEATURES

- Small and lightweight
- Low ripple rugged AC power unit
- Nikon lens mount fitting
- Local sensitivity adjustment



### OPTICAL

Lenses	Nikon F-Mount
Alignment	Engraved Datum lines

### SENSOR

Sensor	Multi-Segment Photodiode array. 400nm – 700nm range
--------	--

### INPUT / OUTPUT SIGNALS

Output (BNC)	Positive 5V
Trigger indicator	LED
Electrical input	AC Power Unit

### POWER

Input	AC Power Unit
-------	---------------

### MECHANICAL

Dimension mm (w/d/h)	<b>Unit with Standard cover</b> 28cm x 28cm x 29cm (11" x 11" x 11.5")
	<b>Unit with Extended cover (Optional)</b> 28cm x 28cm x 38cm (11" x 11" x 15")
	<b>AC Power Unit</b> 150mm x 120mm x 80mm 5.9" x 4.7" x 3.1"

Weights	<b>Standard unit</b> 5.8Kg (12.7lbs)
	<b>Extended cover unit (Optional)</b> 6Kg (13.2lbs)
	<b>AC Power Unit</b> 2Kg / 4.4lb

### ENVIRONMENTAL

Storage temperature	-10°C to +60°C
Operating temperature	-5°C to +45°C
Humidity	10—90% RH non condensing
Vibration shock	10—40 Hz Max. 10g in any direction
EMC	Meets all UKCA/EU harmonised standards

**UK** (Head Office / Factory)  
6 Harvington Park,  
Pitstone Green Business Park  
Pitstone. LU7 9GX England  
**Tel +44 (0) 1442 827728**

**USA**  
Specialised Imaging Inc.  
40935 County Center Dr. Suite D  
Temecula, CA 92591, USA  
**Tel +1 951-296-6406**

**GERMANY**  
Bahnhofstr. 26 D,  
82256 Fürstenfeldbruck,  
Germany  
**Tel +49 8141 666 89 50**



FM87429